

Modular Cooking Range Line 700XP 6-Hot Square Plates Electric Boiling Top Range on Electric Oven



371152 (E7ECML6Q25)

6-Hot Square Plate (2,6 kW each) electric Range on electric Oven (6 kW) - marine

Short Form Specification

Item No.

To be installed on stainless steel feet with height adjustment up to 50 mm. Six 2.6 kW square cast-iron hot plates hermetically sealed to the one-piece top. Stainless steel oven chamber with 3 levels of runners to accommodate 2/1 GN shelves (2 steam pans). Ribbed oven base plate. Exterior panels in stainless steel with Scotch Brite finish. One piece pressed work top in 1.5 mm thick stainless steel. Right-angled side edges to allow flush-fitting junction between units.

Main Features

- Base compartment consists of an electric standard oven with thick oven door for heat insulation, positioned beneath the base plate.
- IPx4 water protection.
- Oven thermostat adjustable from 140 °C to 300 °C.
- The special design of the control knob system guarantees against water infiltration.
- Electric oven to have separate thermostats for top and bottom heating elements.
- Stainless steel oven chamber with 3 levels of runners to accommodate 2/1 GN shelves (2 steam pans).
- Ribbed enamelled steel oven base plate.
- The six 2.6kW cast-iron square plates are hermetically sealed to the one-piece top.

Construction

- Model has right-angled side edges to allow flush fitting joints between units, eliminating gaps and possible dirt traps.
- One piece pressed 1.5 mm work top in Stainless steel.
- All exterior panels in Stainless Steel with Scotch Brite finishing.

APPROVAL: _____

Included Accessories

- 1 of GN2/1 chrome grid for static oven PNC 164250

Optional Accessories

- GN2/1 chrome grid for static oven PNC 164250 ☐
- Kit 4 wheels - 2 swivelling with brake - it is mandatory to install Base support and wheels PNC 206135 ☐
- Frontal kicking strip, 1200mm (not for refr-freezer base) PNC 206178 ☐
- 2 supports with side runners for 4 GN 1/1 containers for open base cupboards (multifunctional cookers, solid top and gas ranges with cupboard) PNC 206244 ☐
- Electric heating kit for cupboards PNC 206259 ☐
- Water column with swivel arm (water column extension not included) PNC 206289 ☐
- Water column extension for 700 line PNC 206291 ☐
- Right and left side handrails PNC 206307 ☐
- Back handrail 1200 mm PNC 206309 ☐
- Door for open base cupboard PNC 206350 ☐
- Base support for feet or wheels - 400mm (700/900) PNC 206366 ☐
- Base support for feet or wheels - 800mm (700/900) PNC 206367 ☐
- Base support for feet or wheels - 1200mm (700/900) PNC 206368 ☐
- Base support for feet or wheels - 1600mm (700/900) PNC 206369 ☐
- Base support for feet or wheels - 2000mm (700/900) PNC 206370 ☐
- Rear paneling - 1200mm (700/900) PNC 206376 ☐
- Chimney grid net, 400mm (700XP/900) PNC 206400 ☐
- 2 side covering panels for free standing appliances PNC 216000 ☐
- Frontal handrail, 800mm PNC 216047 ☐
- Frontal handrail, 1600mm PNC 216050 ☐
- Large handrail - portioning shelf, 800mm PNC 216186 ☐



Electrolux
PROFESSIONAL

Modular Cooking Range Line 700XP 6-Hot Square Plates Electric Boiling Top Range on Electric Oven

Electric

Supply voltage:

371152 (E7ECML6Q25)

400 V/3 ph/50/60 Hz

Total Watts:

21.6 kW

Predisposed for:

Key Information:

Front Plates Power:	2.6 - 2.6 kW
Back Plates Power:	2.6 - 2.6 kW
Front Plates dimensions:	230x230 230x230
Back Plates dimensions:	230x230 230x230

Oven Cavity Dimensions
(width): 540 mm

Oven Cavity Dimensions
(height): 300 mm

Oven Cavity Dimensions
(depth): 650 mm

External dimensions, Width: 1200 mm

External dimensions, Depth: 730 mm

External dimensions, Height: 850 mm

Net weight: 50 kg

Shipping weight: 65 kg

Shipping height: 1180 mm

Shipping width: 820 mm

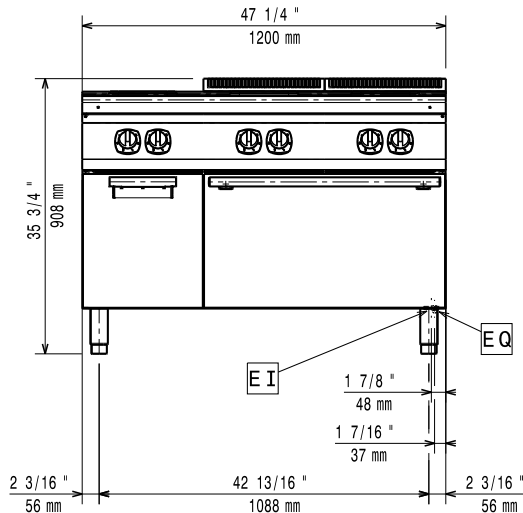
Shipping depth: 1300 mm

Shipping volume: 1.26 m³

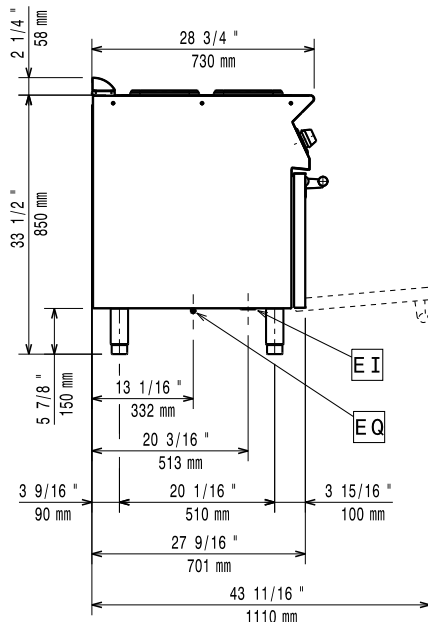
If appliance is set up or next to or against temperature sensitive furniture or similar, a safety gap of approximately 150 mm should be maintained or some form of heat insulation fitted.

Certification group: N7CE1

Front

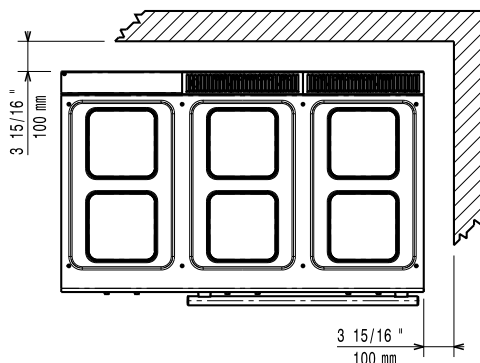


Side



EI = Electrical inlet (power)
EQ = Equipotential screw

Top



Modular Cooking Range Line
700XP 6-Hot Square Plates Electric Boiling Top Range on Electric Oven

The company reserves the right to make modifications to the products without prior notice. All information correct at time of printing.

2022.04.20